

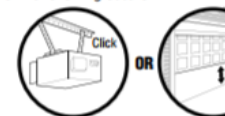
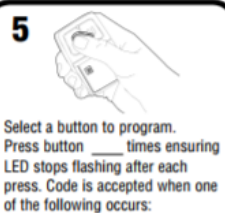
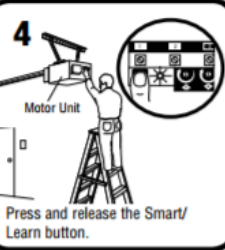
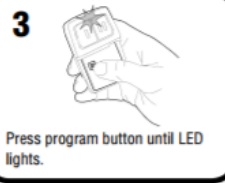
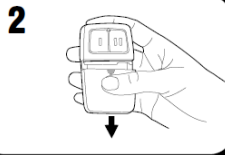
# Liftmaster, Chamberlain, Craftsman

## Universal 375U Programming



### SMART/LEARN BUTTON

**1** See Chart A to determine # of times to press button and write in blank on Step 5.



**NOTE:** If there are problems programming to button 1, program to button 2.

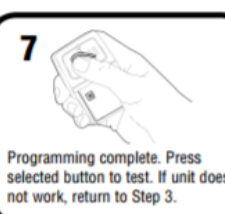


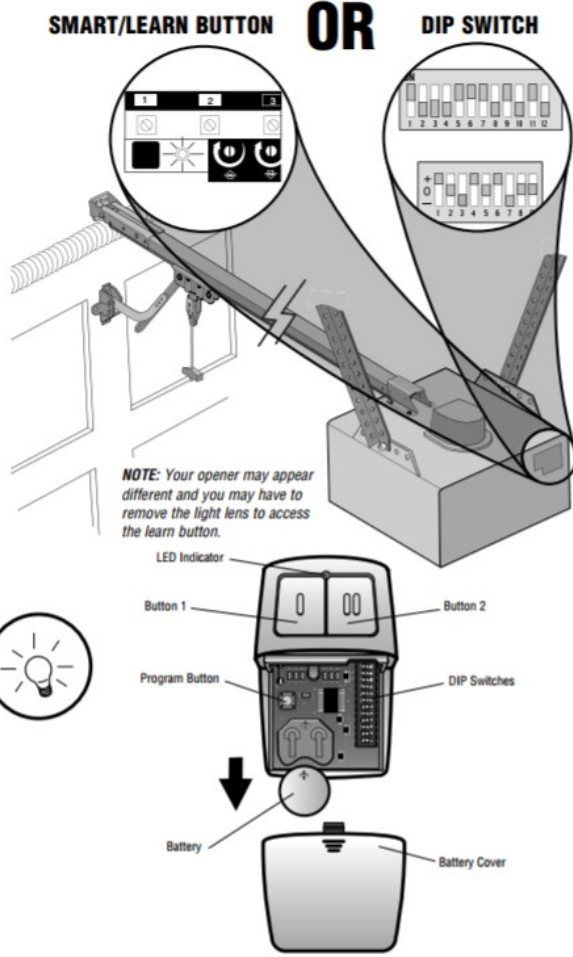
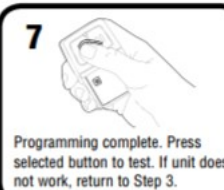
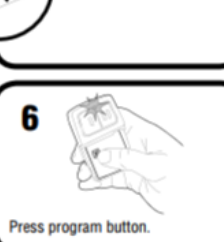
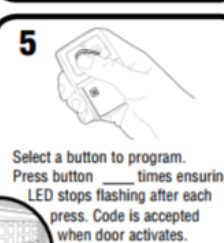
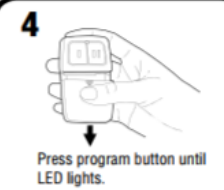
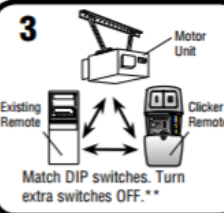
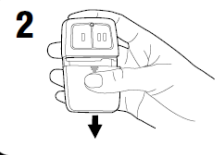
CHART A				
# of times to press button	Brand	Type/Color of Smart/Learn	Year	
1	Linear®	Mega-Code	'97-Current	
2	Chamberlain®	Orange/Red	'97-'03	
3	Chamberlain®	Purple	'05-Current	
4	Chamberlain®	Green	'93-'96	
5	Genie®	Overhead Door®	Intellicode	'95-Current
6	Genie®	Overhead Door®	Intellicode	'93-Current
7	Stanley®	Secure Code	'98	
8	Chamberlain®	Yellow	'11-Current	
9	Wayne Dalton®	Rolling Code	'99	
11	Chamberlain®	9 Position	'90-'92	

CHART B			
# of times to press button	Brand	Description	Year
11	Chamberlain®	9 Position	'90-'92
12	Chamberlain®	9 Position Canada	'83-'89
13	Genie®	12 Position	'85
14	Linear Multicode®	10 Position	'76
15	Chamberlain®	8 Position	'83-'89
16	Stanley/Multicode®	10 Position	'76
17	Genie®	9 Position	'85
18	Linear®	Moore-O-Matic®	'76
19	Chamberlain®	7 Position	'83-'89

**NOTE:** LiftMaster, Do-It, Master Mechanic, Raynor, True Value and Sears Craftsman are compatible with Chamberlain technology.  
**NOTE:** Visit [www.clickerproducts.com](http://www.clickerproducts.com) for Genie Intellicode II instructions.

### DIP SWITCH

**1** See Chart B to determine # of times to press button and write in blank on Step 5.



**NOTE:** Your opener may appear different and you may have to remove the light lens to access the learn button.

### REMOTE CONTROL BATTERY

#### WARNING

- To prevent possible SERIOUS INJURY or DEATH:
- NEVER allow small children near batteries.
  - If battery is swallowed, immediately notify doctor.
- To reduce risk of fire, explosion or chemical burn:
- Replace ONLY with 3V2032 coin batteries.
  - DO NOT recharge, disassemble, heat above 100° C (212° F) or incinerate.

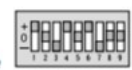
Dispose of batteries properly. Replace ONLY with 3V2032 coin batteries.

**NOTICE:** To comply with FCC and/or Industry Canada (IC) rules, adjustment or modifications of this receiver and/or transmitter are prohibited, except for changing the code setting or replacing the battery. THERE ARE NO OTHER USER SERVICEABLE PARTS.  
 Tested to Comply with FCC Standards FOR HOME OR OFFICE USE. Operation is subject to the following two conditions: (1) this device may not cause harmful interference, and (2) this device must accept any interference received, including interference that may cause undesired operation.

**NOTE:**  
**2 Position DIP Switch:**  
 If programming fails reverse DIP switches (OFF to ON and ON to OFF).



**\*\*3 Position DIP Switch:**  
 For Chamberlain remotes DO NOT use the "0" position, use "+" or "-". If you already have a 3-button remote, DIP switch #1 must be set to "-" if the large button is to open the door. It may be necessary to reprogram original remote controls.



**Product Registration and Troubleshooting**  
[www.clickerproducts.com](http://www.clickerproducts.com) • 1-800-442-1255

Chamberlain, LiftMaster and Moore-O-Matic are Trademarks of Chamberlain Group. Genie and Intellicode are trademarks of GMI Holdings, Inc. Overhead Door is a Trademark of Overhead Door Corporation. Linear is a Trademark of Linear Corporation. Master Mechanic is a Trademark of TruServ. Sears is a Trademark of Sears & Roebuck. Stanley is a Trademark of The Stanley Works. Wayne Dalton is a trademark of Wayne Dalton Corporation. Do It is a trademark of Do It Best Corporation.